




>> Type of use (\*)

This garment is for signaling the user's presence visually, intended to provide conspicuity of the user in hazardous situations under any light conditions by day and under illumination by vehicle headlights in the dark. Road maintenance, maintenance of parks and gardens, public works professions, transport, construction, dockers, movers, tour guides, security jobs...

>> Technical features

- ✓ High visibility Softshell jacket with detachable hood and sleeves.
- ✓ Softshell in 100% polyester with TPU coating.
- ✓ Inside fleece finish.
- ✓ Removable storm hood by zipper. Drawstring.
- ✓ Removable sleeves with zipper.
- ✓ Retroreflective tapes.
- ✓ Central waterproof zip fastening.
- ✓ 2 outside chest pockets with flap. outside rest pockets with zip.
- ✓ 1 pocket at left sleeve. 2 inner pockets at bottom.
- ✓ Warm knitted wrist under the sleeves.
- ✓ Colour: yellow / blue. Grey tapes

✓ Sizes and packaging

	M, L, XL, 2XL	S, 3XL,	
Carton	10 units	5 units	
Bundle	1 unit	1 unit	

Learn more : [www.singer.fr](http://www.singer.fr)

>> Main advantages

- ✓ Numerous and convenient pockets. Comfortable knitted wind cuffs under the sleeves.
- ✓ Lightweight while providing essential security particularly at night thanks to its retro-reflective material.
- ✓ Warm polar fleece lining. Straight collar and «storm» hood for a good protection of the neck.
- ✓ Special fabric with wate barrier membrane in, makes it breathable and water resistant.
- ✓ Dark blue colour at garment bottoms to prevent soiling of the high-visibility material.
- ✓ Convenient 2-in-1 system offers wearer options to use as a jacket (with sleeves) or a vest (without sleeves)
- ✓ Small retro-reflective tapes above the shoulders for good visibility even above the wearer (good visibility for example from crane operators on construction sites!).

>> Compliance

This garment has been tested according to the following European Standards (Category II).

- EN ISO 13688: 2013. Protective garment. General requirements.
- EN 14058: 2004. Garments for protection against cool environments.
- EN ISO 20471: 2013. High visibility clothing - Test methods and requirements.

It complies with the European Regulation (EU) 2016/425 on Personal Protective Equipment (PPE).

EU examination type certificate (module B) issued by CENTEXBEL, notified body n°0493.



EN ISO 20471: 2013 +A1 : 2016    EN 14058: 2004

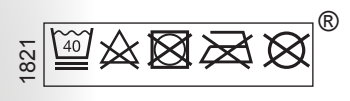
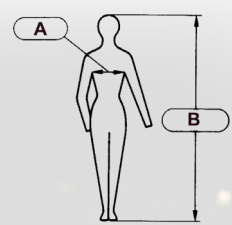
 2	 1	 1 3 X X X
Jacket with sleeves	Vest without sleeve	



Your distributor **SINGER® SAFETY**



(\*) Type of use is given as a guide only. It is to the end user to check whether the product is suitable or not for the intended use. Before any use, read carefully the instructions enclosed with the product. Issue LS 2018\_06\_05. Copyright: Singer. Fotolia

sizes	Chest (cm) (A)	Height (cm) (B)
S	84-96	160-172
M	92-104	166-178
L	100-112	172-184
XL	108-120	180-192
2XL	116-128	188-198
3XL	126-138	192-202



EN ISO 20471: 2013 +A1 : 2016	 2	 1
	Jacket with sleeves	Vest without sleeve
	Result ▼	Result ▼
Background & Retro-reflective material	Class 2	Class 1

**Information about classes**  
 Class 3: highest level of visibility. Class 2: intermediate visibility level.  
 Class 1: lowest level of visibility.


Minimum area requirement in m <sup>2</sup>	Class 3 garment	Class 2 garment	Class 1 garment
Background material	0.80	0.50	0.14
Retro-reflective material	0.20	0.13	0.10
Combined performance material			0.20

**Background fluorescent coloured material, for the day**  
 Fluorescence is the ability of a material to reflect more light than it receives.  
 Consequently fluorescent colors seem more vivid than those which does not have this property.

**Retro-reflective material for night**  
 A retro-reflector is a device capable of reflecting the light it receives back in directions close to the source. Thus the driver who light a pedestrian in the night with the headlights of his vehicle, can identifies very quickly the garment which features a retro-reflective material.

The coefficient of retro-reflection of the retro-reflective material must be class 2 to comply with EN ISO20471 (class 1 of previous EN471 standard has been cancelled).

(x) the figure next to the pictogram indicates the category of the garment according to the minimum area requirement in m<sup>2</sup>.

	1 3 X X X
<b>EN 14058: 2004</b>	<b>Result</b> ▼
Thermal resistance class	<b>1</b>
Air permeability class (Optional)	<b>3</b>
Water penetration resistance class (optional)	X
Insulation value I <sub>cler</sub> in m <sup>2</sup> K/W (optional)	X
Insulation value I <sub>cle</sub> in m <sup>2</sup> K/W (optional)	X

«X» means that the garment has not been submitted to the test  
 The thermal insulation may decrease after washing procedures..

Thermal resistance	Rct (m <sup>2</sup> K/W)	Class
	0.06 ≤ Rct < 0.12	1
	0.12 ≤ Rct < 0.18	2
	0.18 ≤ Rct < 0.25	3

Air permeability	AP mm/s	Class
	100 < AP	1
	5 < AP ≤ 100	2
	AP ≤ 5	3



Your distributor **SINGER® SAFETY**

